



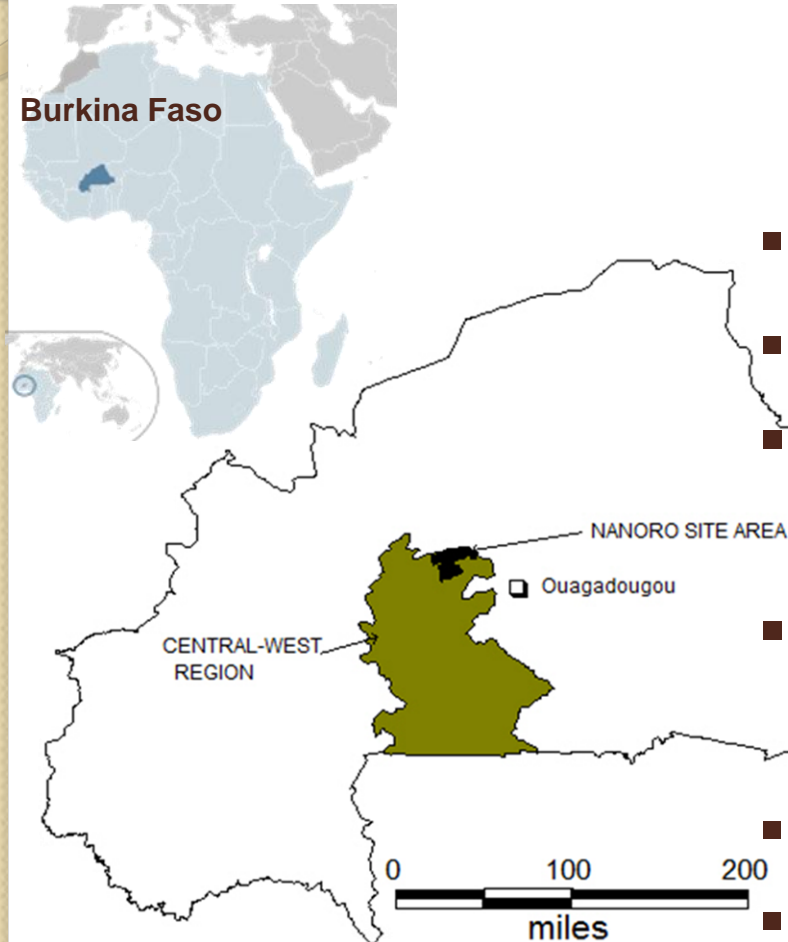
# **Nanoro HDSS, Burkina Faso**

**Karim Derra, Demographer**

**HDSS Manager**

# Clinical Research Unit of Nanoro (CRUN)

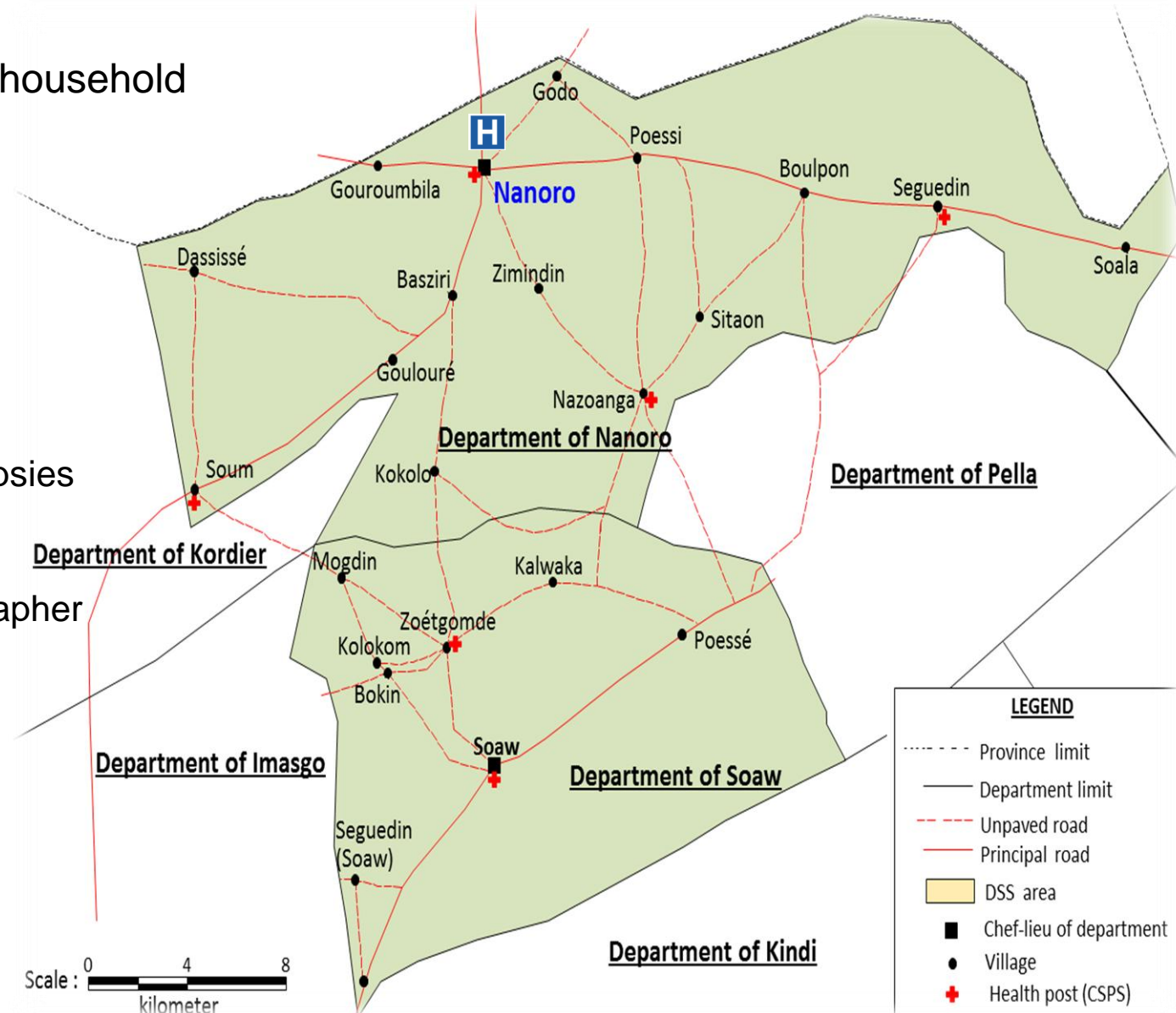
**Mission:** to strengthen the rational basis of health care for populations living in tropical countries.



- Located at Center Western BF, 85 km from Ouagadougou  
(*latitude* 12,41262, *longitude* - 2,11547)
- $\approx$  600 Km<sup>2</sup> in rural area
- HDSS began → **March 2009**
- Economical activities: **Agriculture**
- Mossi community (>90%)
- **24 Villages**
- **7 Health centers**
- **1 Referral hospital**

# ... Nanoro HDSS

- ❑ Regular 4-monthly household updated visits
- ❑ Events :
  - Marriages
  - Pregnancies
  - Births
  - In/out migrations
  - Deaths + Verbal autopsies
- ❑ Staff :
  - Demographer, Geographer
  - Data Managers
  - FWs, Supervisors
  - Key Informants
- ❑ Studies (>10) :
  - Clinical trial
  - Biological
  - Epidemiological



# Demographic characteristics

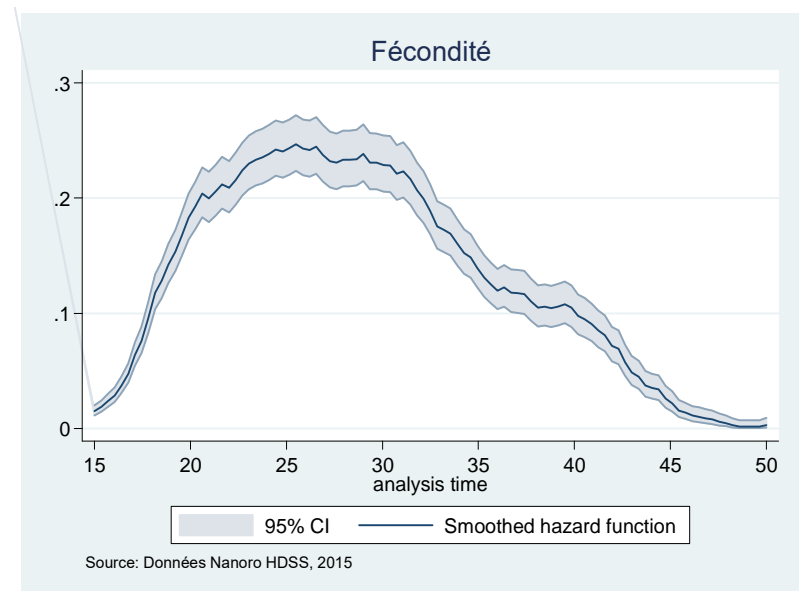
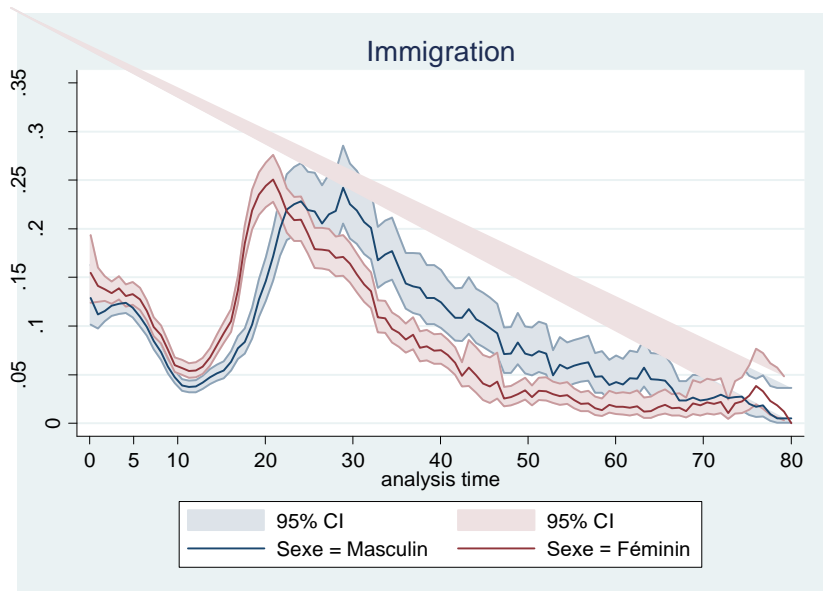
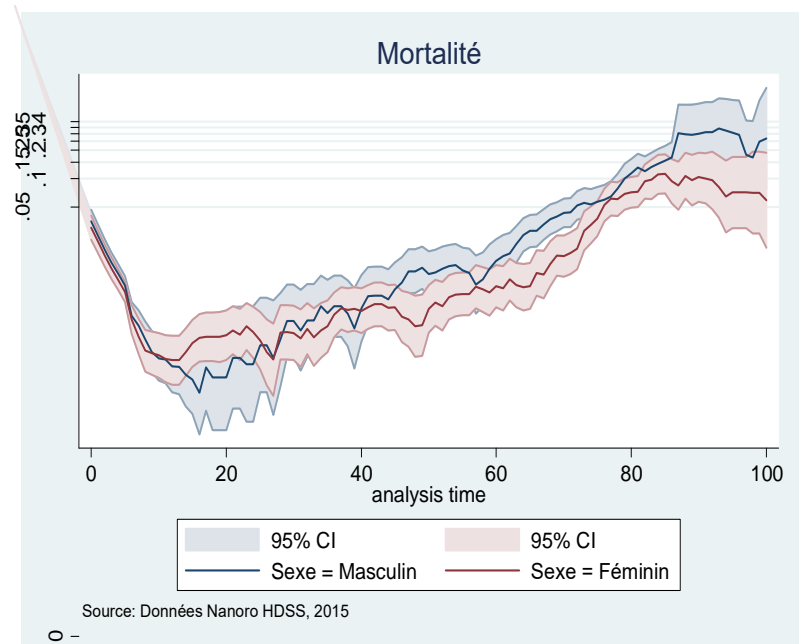
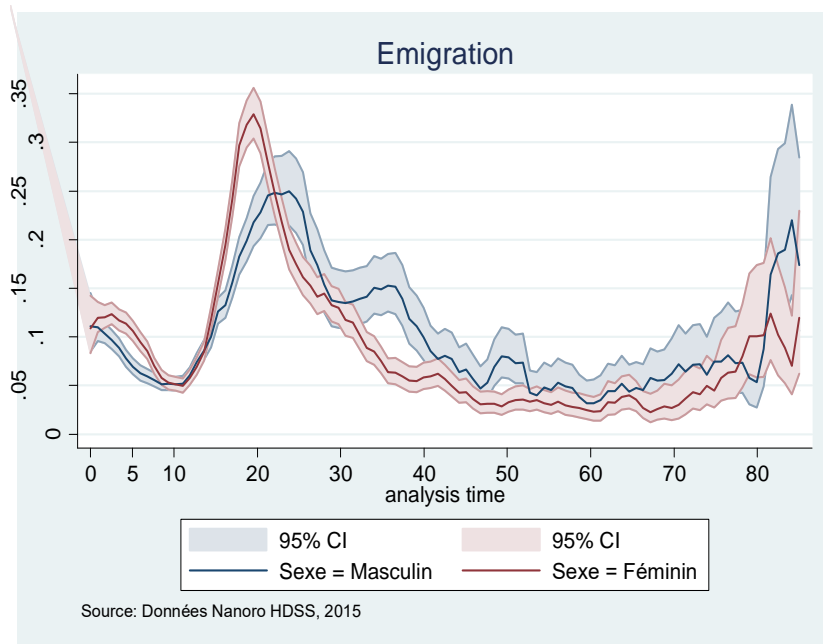
Index	2013	[95% C. I.]
Total resident population	<b>64 551</b>	
Male: female ratio	76:100	
Population density	108/km <sup>2</sup>	
Population growth	1.029%	
Crude Birth Rate (CBR) / 1000 pyo	31.7	[30.3 - 33.6]
Crude Death Rate (CDR) / 1000 pyo	07.1	[06.4 - 07.8]
Crude In-migration rate / 1000 pyo	96.7	[94.2 - 99.3]
Crude Out-migration rate / 1000 pyo	100.8	[98.3 - 103.4]
Total Fertility Rate (TFR)	4.5	
Neonatal Mortality / 1000 live births	20.0	[14.6 - 27.3]
Infant Mortality / 1000 live births	36.2	[28.8 - 45.5]
Under Five Mortality / 1000 pyo	59.9	[50.3 - 71.2]
Life expectancy at birth (females)	72.2 years	[64.4 - 74.9]
Life expectancy at birth (males)	65.5 years	[63.9 - 68.1]



# Graphs... 2013

CRUM

URCN



# DATA

## Required and optional data for Fertility Analysis

	input		
SEJOUR	IndividualId	required	✓
	LocationId	required	✓
	HouseholdId	required	✓
	Compound	required	✓
	DoB	required	✓
	Sex	required	✓
	Date of Entry	required	✓
	Type of Entry	required	✓
	Date of Exit	required	✓
	Type of Exit	required	✓
	MotherID	required	✓
	Marital status at Entry (for women)	optional	✓
	Parity at Entry (for women)	optional	
BIRTH	IndividualId		✓
	Date of Birth		✓
	Rank	optional	✓

MARRIAGE	IndividualId		✓
	MarriageDate	optional	✓
	MarriageType	optional	✓
	other usefull information	optional	✓
DIVORCE	IndividualId		✓
	DivorceDate	optional	✓
	DivorceType	optional	
	other usefull information	optional	
WIDOW	IndividualId		✓
	WidowDate	optional	✓
	WidowType	optional	
	other usefull information	optional	
OTHER	IndividualId		✓
	level of education	optional	✓
	economical level of HH	optional	at entry, 2013
	occupation of Head of HH	optional	✓
	education of Head ofHH	optional	✓
	living arrangement	optional	✓
	other usefull information	optional	migration

# Publications

- Peer-review Papers... **focused mainly on malaria**
  - 2016 (ongoing) : 6
  - 2015 : 19
  - 2014 : 14
  - 2013 : 14
  - 2012 : 07
  - 2011 : 06
  - 2010 : 03



HDSS is good  
formwork for  
population and  
health research



**Thanks !**



# CRUN : Our partners

- Programme National de Lutte contre le Paludisme (PNLP)
- Direction Générale de la Pharmacie, du Médicament et des Laboratoires (DGPML)
- Institut de Médecine Tropicale (IMT), Anvers, Belgique
- University of Washington
- KIT, Amsterdam
- London School of Tropical Medicine, UK
- Liverpool School of Medicine, UK
- INDEPTH network
- Malaria in Pregnancy Consortium
- MALACTRES consortium
- WANETAM Plus
- Clinical Trial Network
- MCTA /ACTA
- GlaxoSmithKline
- Pfizer
- Sanofi Aventis
- Sigma Tau
- Malaria Vaccine Initiative (MVI)
- Medicine for Malaria Venture (MMV)
- Fondation Bill & Melinda Gates
- OMS / TDR
- EDCTP
- European Union

# ... Nanoro HDSS



Compounds refresh numerating in one village (Poessi) in DSA, October 2010



Geo-localization in a new compound by the Geographer, October 2010



CRUJN

URCN