

KILITE-AWLAELO HDSS

**ADOLESCENT FERTILITY ANALYSIS
WORKSHOP**

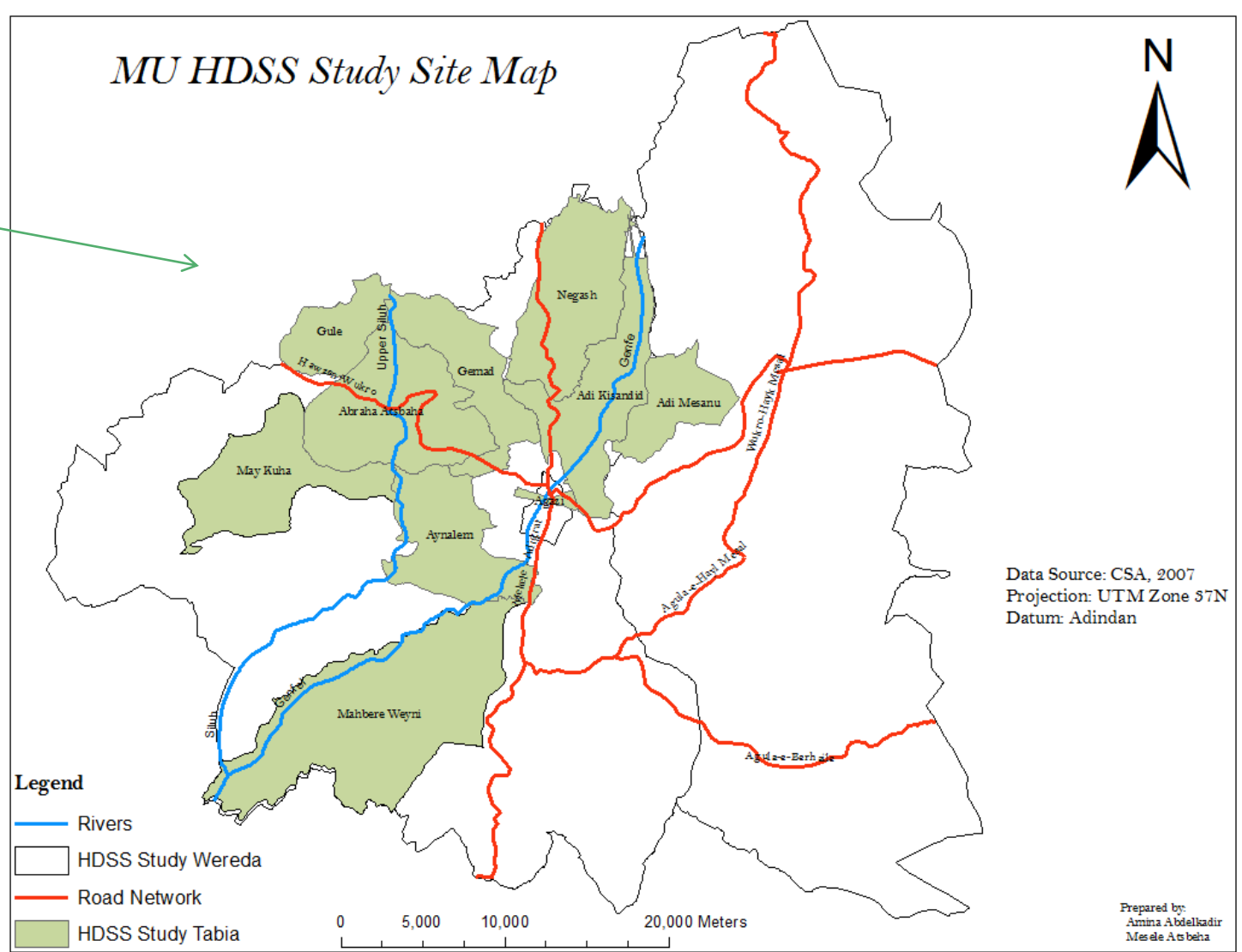
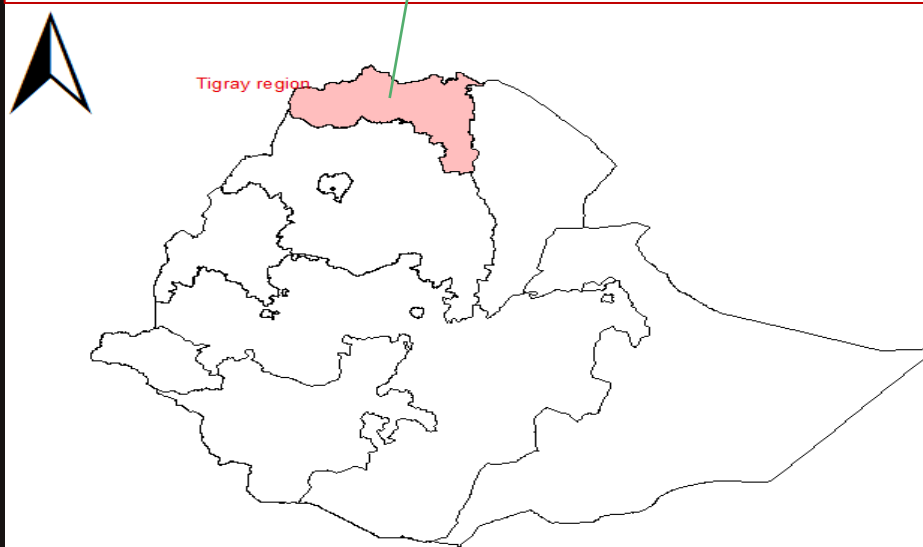
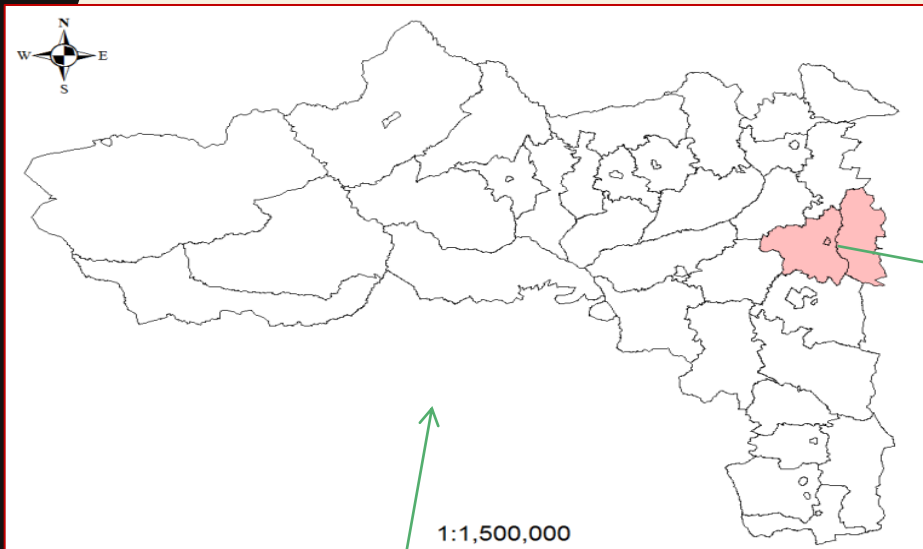
ACCRA GHANA, MAY, 02, 2016

BY: ALEMSGED A. (KA-HDSS)

MAP AND POPULATION

- Established in 2009 for 10 Kebelles;
- as of march 2016; includes 4 kebelles from Wkro town.
- **Population** : Monitors 64,575 population and 15,871 households
- Currently includes 51,678 population and reaches 116,253 in 24,978 households.
- **Density** : 150 /km²
- **Distance to Addiss Aaba** : 812 kms
- **Economical activities** : Faming
- **Fertility** : 3.3 (2010-2014)
- **% 15-24 y who attend school** : 88% girls ; 92% boys (2010-2014)

SURVEILLANCE AREA



DATA

Required and optional data for Fertility Analysis

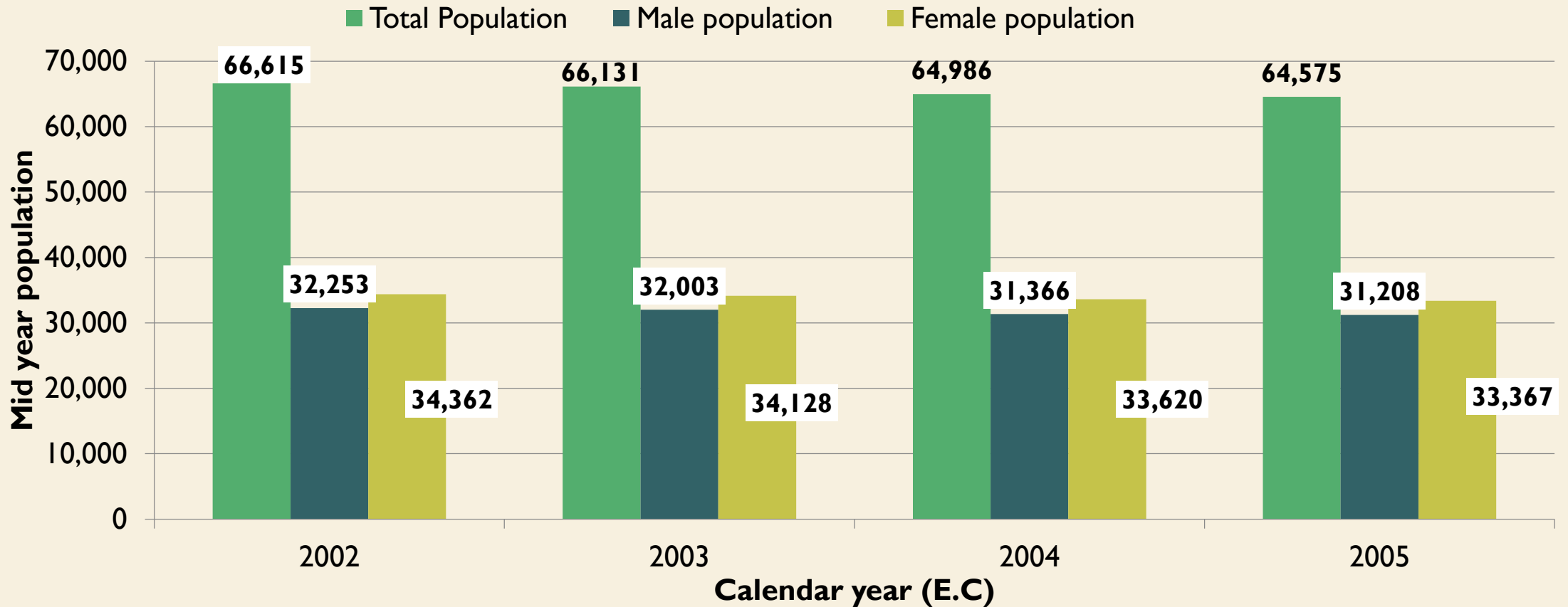
| input | | | |
|----------|--|----------|---|
| SEJOUR | IndividualId | required | ✓ |
| | LocationId | required | ✓ |
| | HouseholdId | required | ✓ |
| | Compound | required | ✓ |
| | DoB | required | ✓ |
| | Sex | required | ✓ |
| | Date of Entry | required | ✓ |
| | Type of Entry | required | ✓ |
| | Date of Exit | required | ✓ |
| | Type of Exit | required | ✓ |
| MotherID | required | ✓ | |
| | Marital status at Entry (for women) | optional | ✓ |
| | Parity at Entry (for women) | optional | ✓ |
| BIRTH | IndividualId | | ✓ |
| | Date of Birth | | ✓ |
| | Rank | optional | ✓ |

| | | | |
|----------|---------------------------|----------|-----------|
| MARRIAGE | IndividualId | | ✓ |
| | MarriageDate | optional | ✓ |
| | MarriageType | optional | ✓ |
| | other usefull information | optional | ✓ |
| DIVORCE | IndividualId | | ✓ |
| | DivorceDate | optional | ✓ |
| | DivorceType | optional | |
| | other usefull information | optional | |
| WIDOW | IndividualId | | ✓ |
| | WidowDate | optional | ✓ |
| | WidowType | optional | |
| | other usefull information | optional | |
| OTHER | IndividualId | | ✓ |
| | level of education | optional | |
| | economical level of HH | optional | |
| | occupation of Head of HH | optional | |
| | education of Head of HH | optional | |
| | living arrangement | optional | ✓ |
| | other usefull information | optional | migration |

❖ SOME OF THE FINDINGS

❖ Population structure and distribution

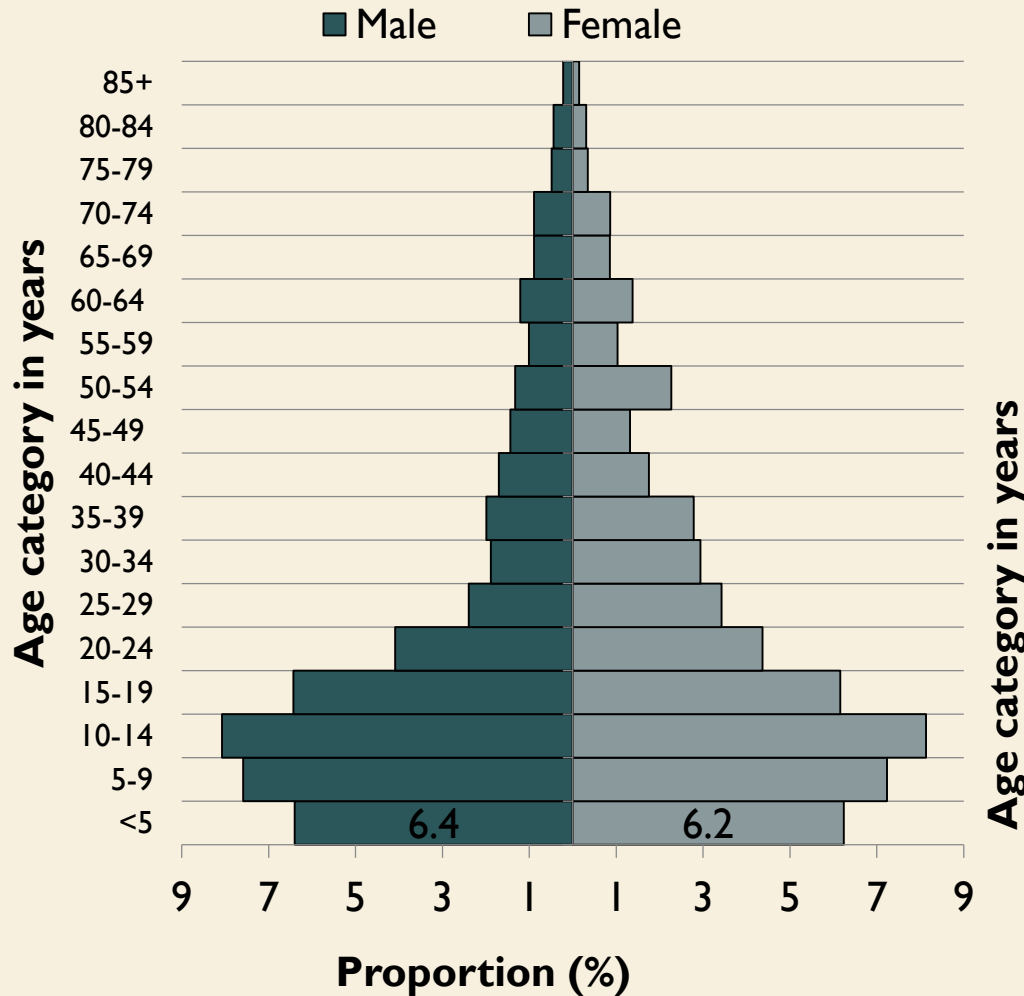
✓ Shrinking population



| | | | | |
|-------------------|-------------|-------------|-------------|-------------|
| Male (%) | 48.4 | 48.4 | 48.3 | 48.3 |
| Female (%) | 51.6 | 51.6 | 51.7 | 51.7 |

POPULATION PYRAMID

A-2002



B-2005

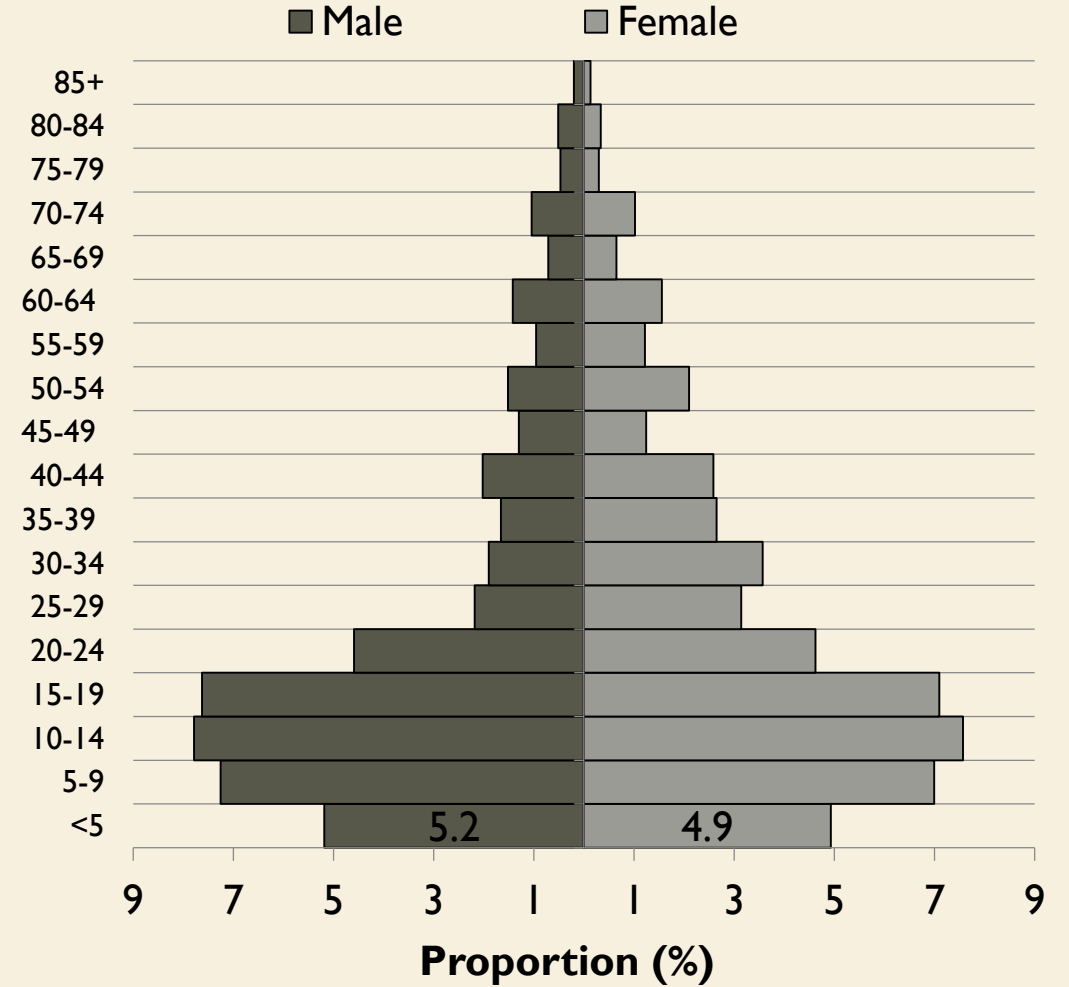
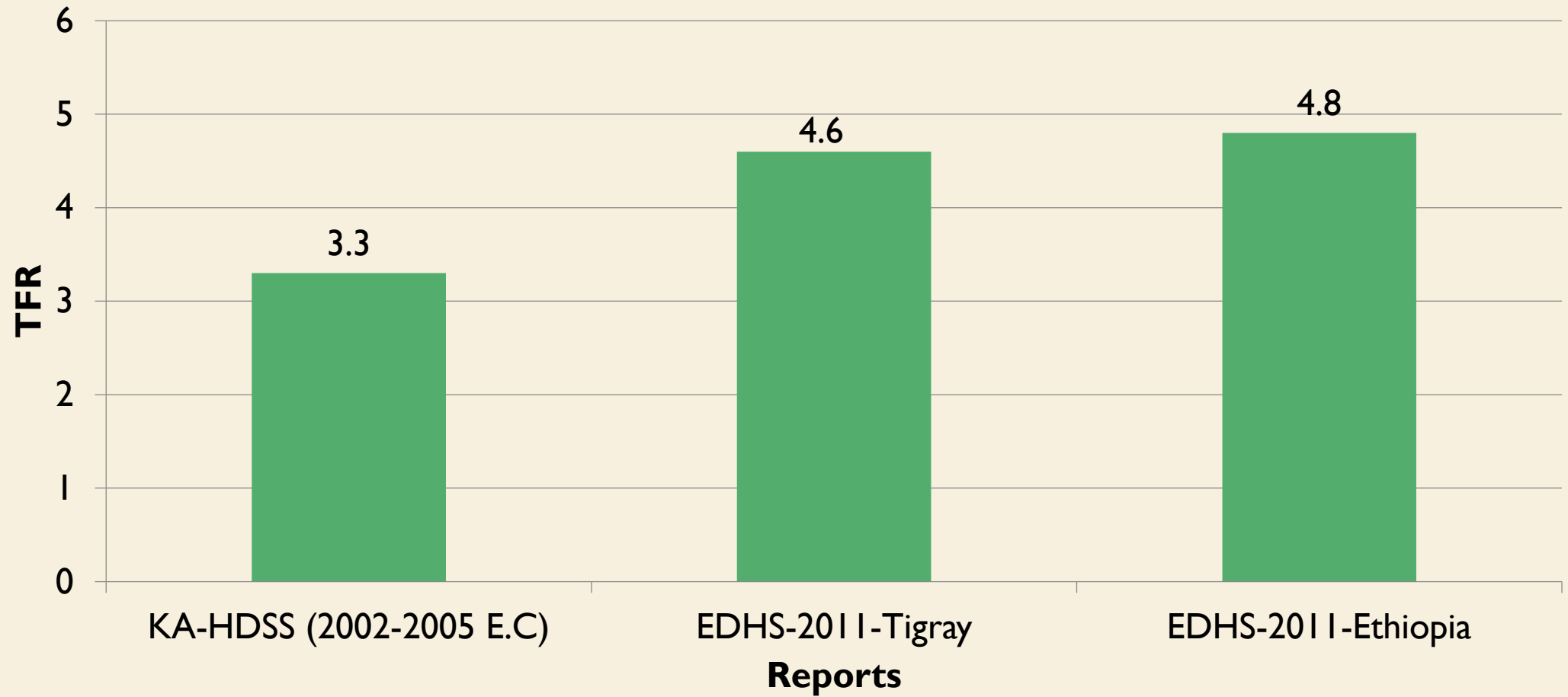


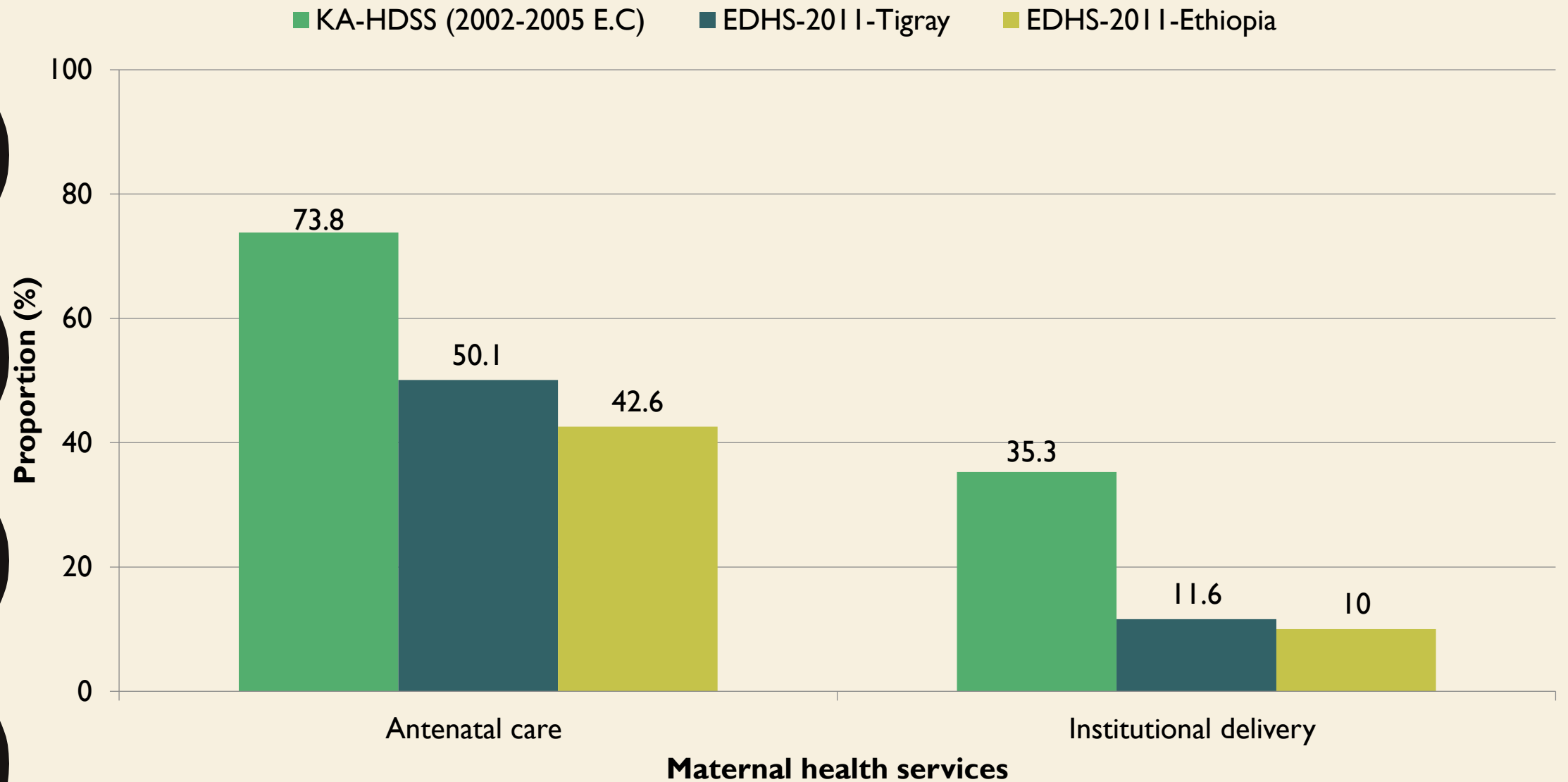
Figure- (A) Population pyramid of KA-HDSS at baseline (Meskerem 2002) and (B) at mid of 2005

COMPARISON OF TFR-KA-HDSS (2002-2005) AND EDHS-2011

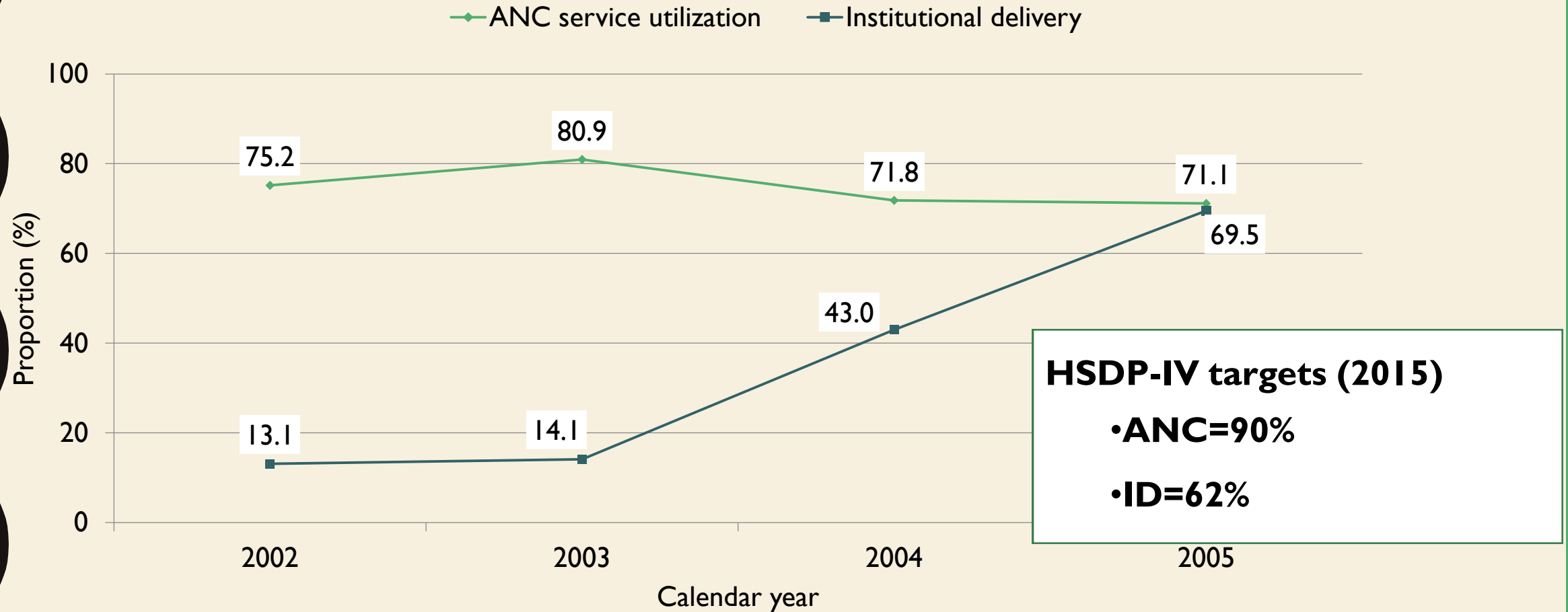


National Population policy target TFR=4.0 by 2015

COMPARISON OF MATERNAL HEALTH CARE SERVICE UTILIZATION WITH EDHS-2011



PATTERN OF ANC AND ID IN KA-HDSS



•ANC coverage could be greater (~95% and above) as it is registered immediately after the data collectors identified the pregnancy and interviews are done once by then only.

SELECTED PUBLICATIONS

- **Melaku YA**, Weldearegawi B, Tesfay FH, Abera SF, Abraham L, et' al: "Poor linkages in maternal health care services—Evidence on antenatal care and institutional delivery from a community-based longitudinal study in Tigray Region, Ethiopia." *BMC pregnancy and childbirth* 2014, 14:418. Doi: 10.1186/s12884-014-0418-7.
- **Melaku YA**, Sahle BW, Tesfay FH, Bezabih AM, Aregay A, et al. (2014) "Causes of Death among Adults in Northern Ethiopia: Evidence from Verbal Autopsy Data in Health and Demographic Surveillance System." *PLoS ONE* 9(9): e106781. doi:10.1371/journal.pone.0106781
-
- **Melaku YA**, Weldearegawi B, Aregay A, Tesfay FH, Abreha L, et' al: "Causes of Death among Females—Investigating beyond Maternal Causes: a Community-Based Longitudinal Study." *BMC Research Notes* 2014, 7: 629 ;doi:10.1186/1756-0500-7-629.
- **Weldearegawi B, Melaku YA, Spigt M, Dinant JG**: "Using InterVA-4 model for estimating causes of death in rural Ethiopia." *Glob Health Action* 2014,7: 25550 <http://dx.doi.org/10.3402/gha.v7.25550>.
-
- **Weldearegawi B**, Ashebir Y, Gebeye, E, et al. "Emerging chronic non-communicable diseases in rural communities of Northern Ethiopia: evidence using population-based verbal autopsy method in Kilite Awlaelo surveillance site." *Health Policy and Planning* 2013;1–8 doi:10.1093/heapol/czs135
- **Weldearegawi B**, Spigt M et al. "Mortality Level and Predictors in a Rural Ethiopian Population: Community Based Longitudinal Study". *PLoS ONE* 9(3): e93099. doi:10.1371/journal.pone.0093099

- Thank you for your attention.

IDEAS FOR ANALYSIS

- Trends in premarital fertility and contribution to the fertility decline
- Rural-urban circular migration as determinant of premarital fertility
- Link with mortality